



Raleigh, N. Carolina

TRADE MARK



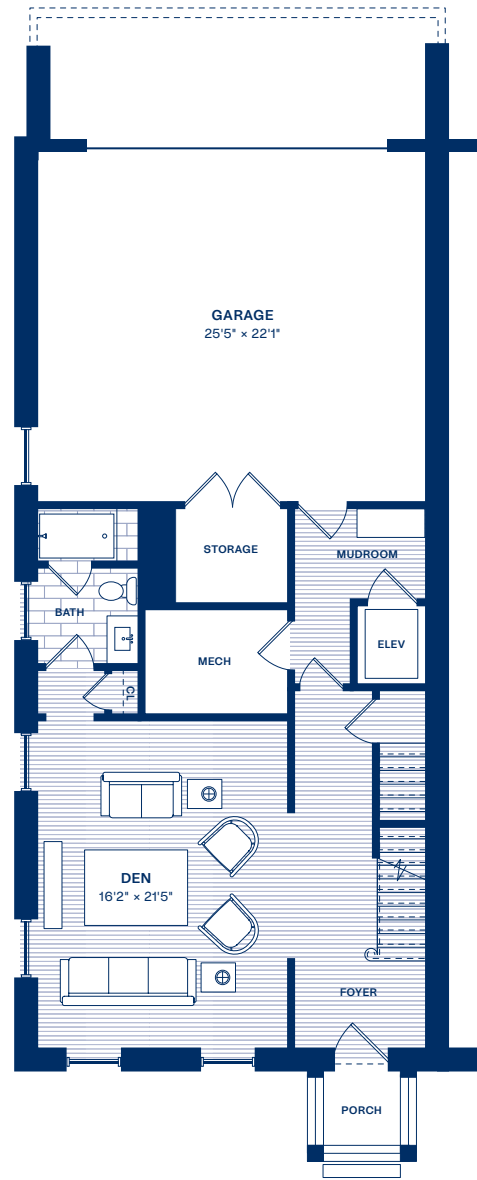
BIRNEY PARK

City Home 6

2615 BIRNEY PARK CIR.

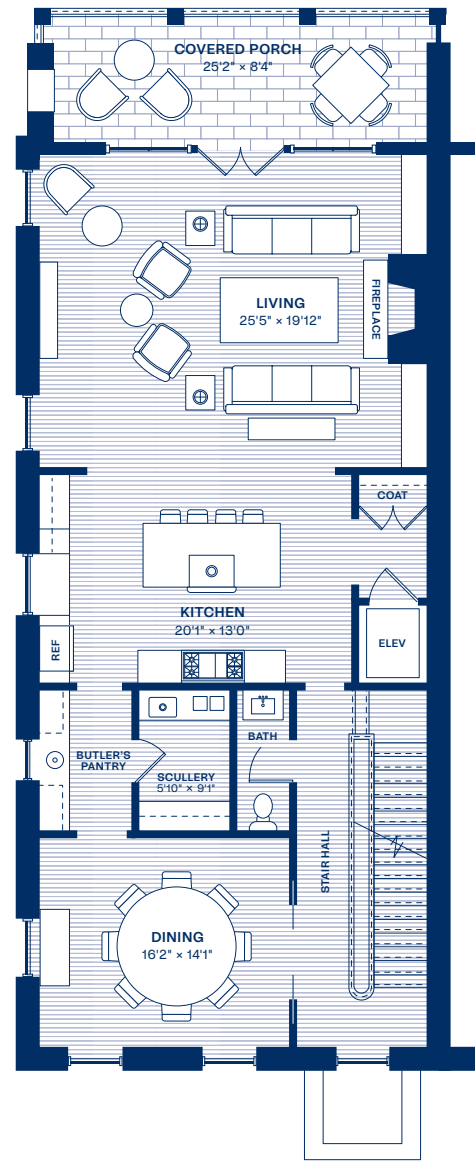


BIRNEY PARK



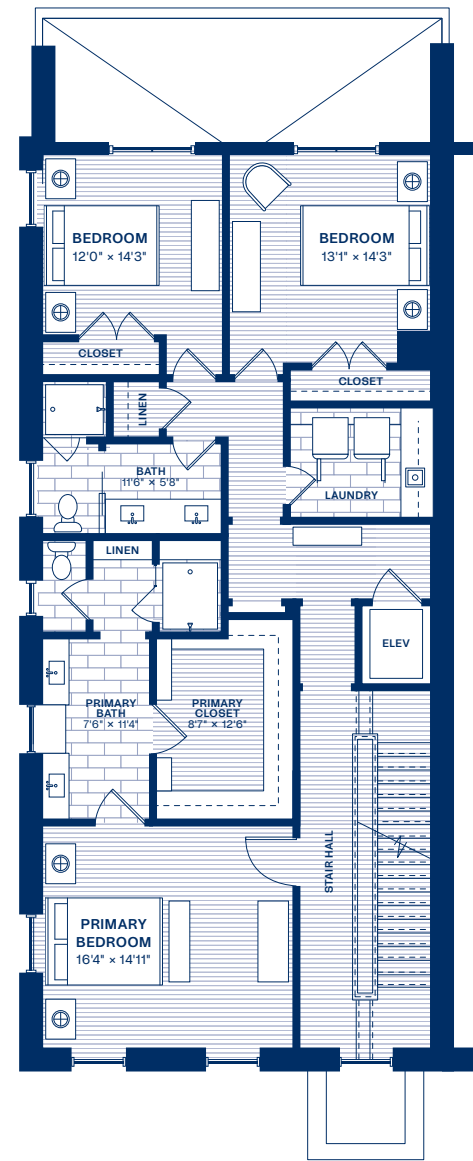
Ground Floor

- Den
- 1 Bathroom
- Mudroom
- Garage



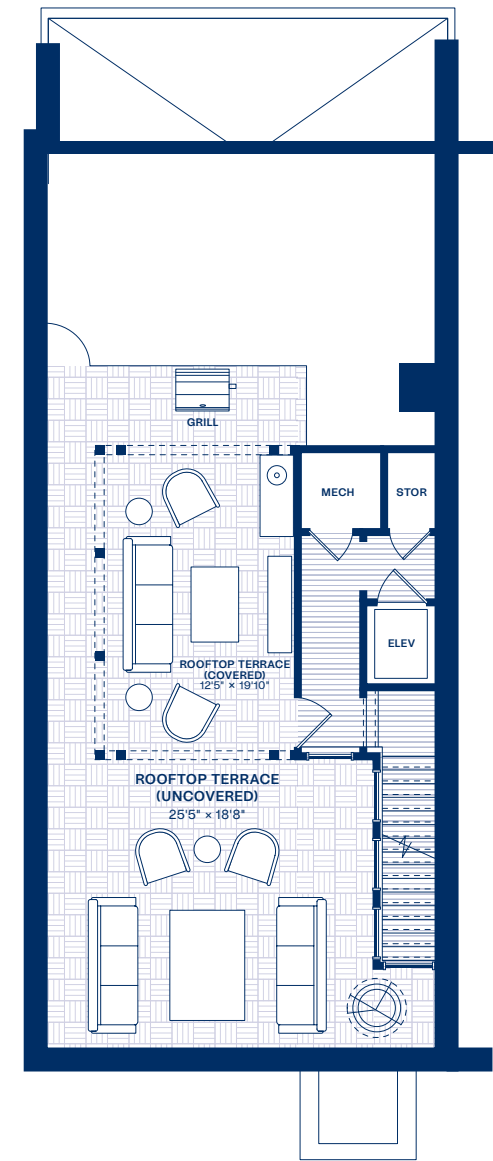
First Floor

- Kitchen w/Scullery
- Butler's Pantry
- Dining Room
- Living Room
- Powder
- Covered Porch



Second Floor

- 3 Bedrooms
- 2 Bathrooms
- Laundry



Rooftop Terrace

- 2 Sitting Areas
- Covered & Uncovered Roof
- Grill Area

TOTAL LIVING AREA SQR. FT. 5,842 sqft

Heated	4,063	Porches	493
Unheated/Garage	704	Rooftop Terrace	582

While renderings, floor plans, and descriptions aim to portray Birney Park residences accurately, final dimensions, configurations, and finishes may vary slightly due to construction practices and regulations. Please refer to sales contracts and specifications for confirmed details.

The City Homes
at Birney Park

