

BIRNEY PARK

The Brightbury

RESIDENCE 204

2 Bedrooms
2 Bathrooms
Powder Room
Den / Sitting Room

TOTAL INTERIOR / OUTDOOR

1,702 sqft / 208 sqft

SIGNATURE AMENITIES: EXTENDING YOUR LIVING

Gallery Entry = 773 sqft

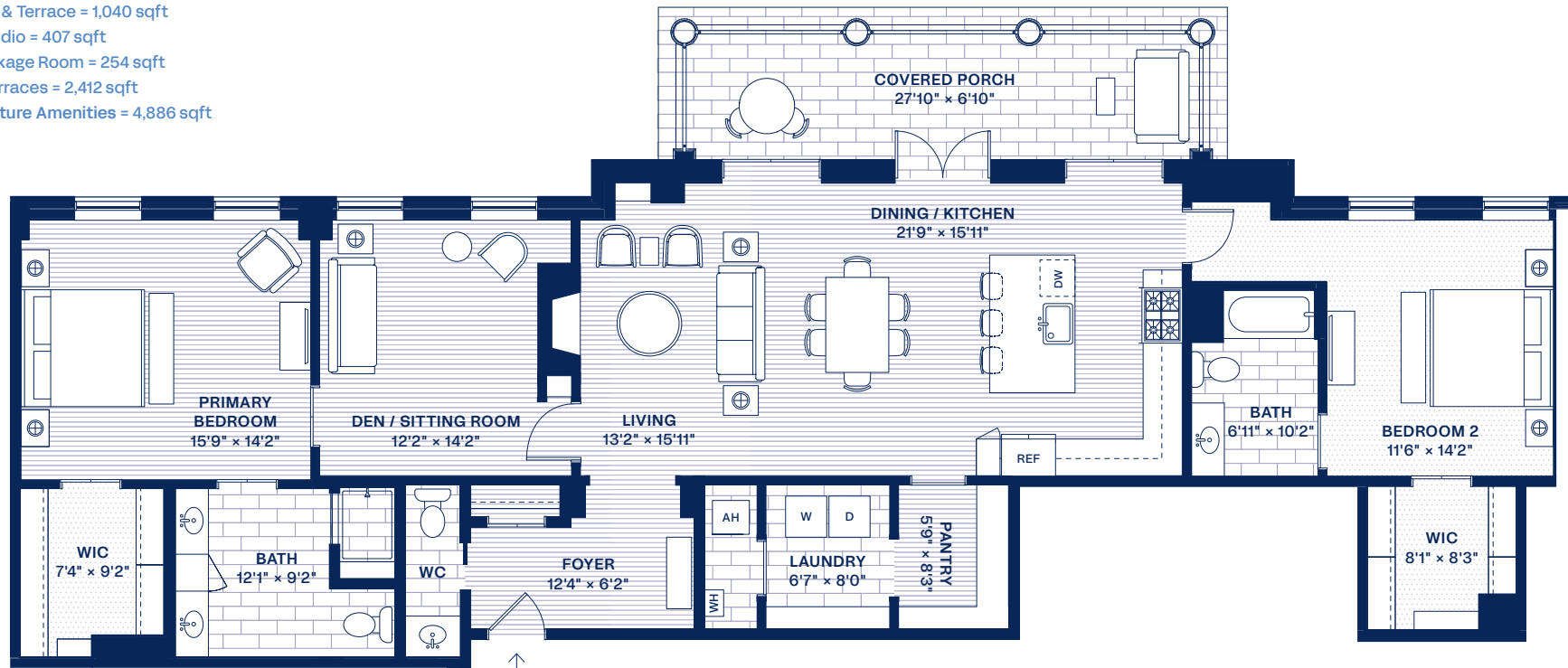
Club Room & Terrace = 1,040 sqft

Fitness Studio = 407 sqft

Post & Package Room = 254 sqft

Rooftop Terraces = 2,412 sqft

Total Signature Amenities = 4,886 sqft



While renderings, floor plans, and descriptions aim to portray Birney Park residences accurately, final dimensions, configurations, and finishes may vary slightly due to construction practices and regulations. Please refer to sales contracts and specifications for confirmed details.

