

# BIRNEY PARK

*The Brightbury*

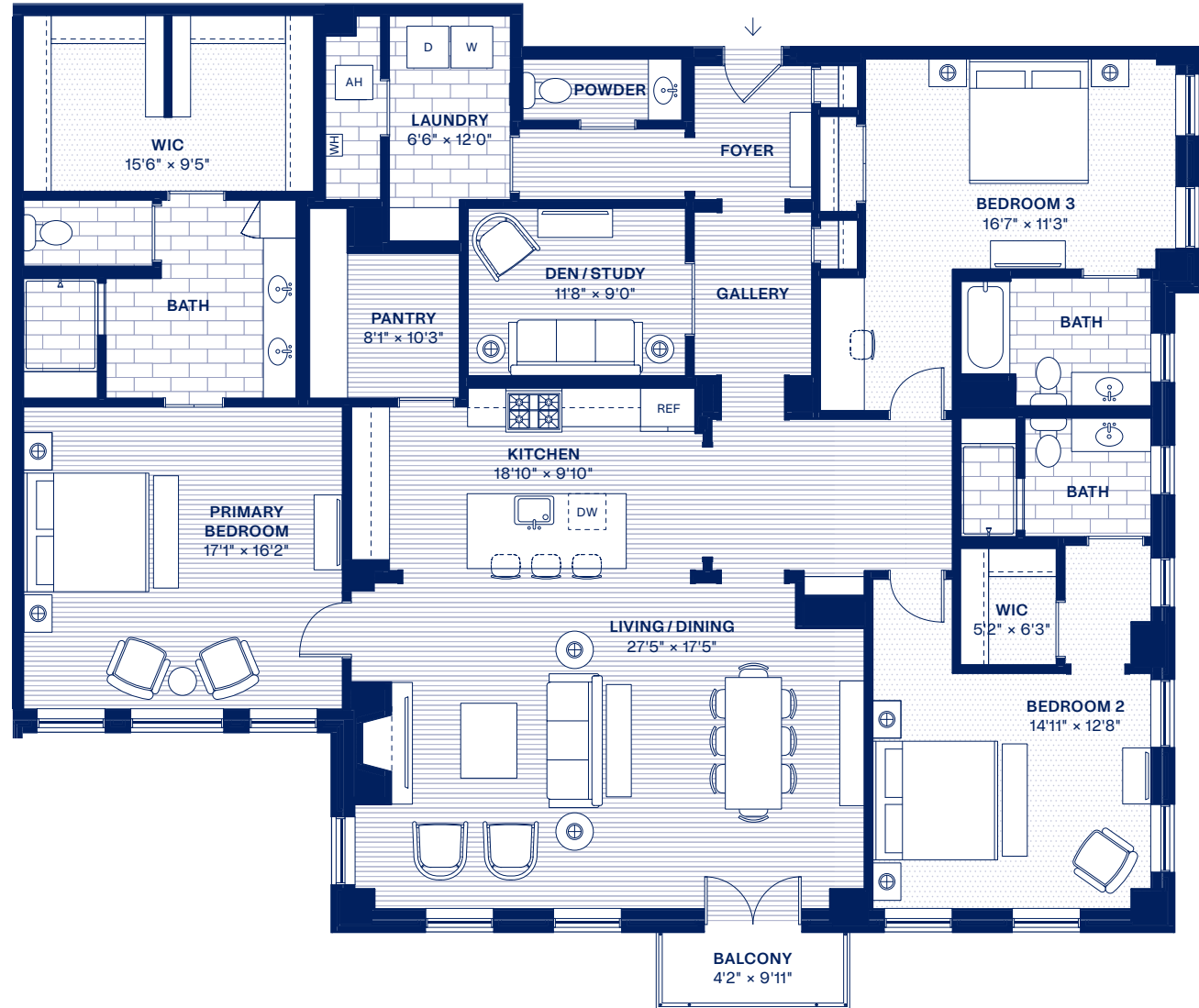
## RESIDENCE 302

3 Bedrooms  
3 Bathrooms  
Powder Room  
Den / Study

**TOTAL INTERIOR / OUTDOOR**  
2,602 sqft / 44 sqft

### SIGNATURE AMENITIES: EXTENDING YOUR LIVING

Gallery Entry = 773 sqft  
Club Room & Terrace = 1,040 sqft  
Fitness Studio = 407 sqft  
Post & Package Room = 254 sqft  
Rooftop Terraces = 2,412 sqft  
**Total Signature Amenities = 4,886 sqft**



While renderings, floor plans, and descriptions aim to portray Birney Park residences accurately, final dimensions, configurations, and finishes may vary slightly due to construction practices and regulations. Please refer to sales contracts and specifications for confirmed details.

