

BIRNEY PARK

The Brightbury

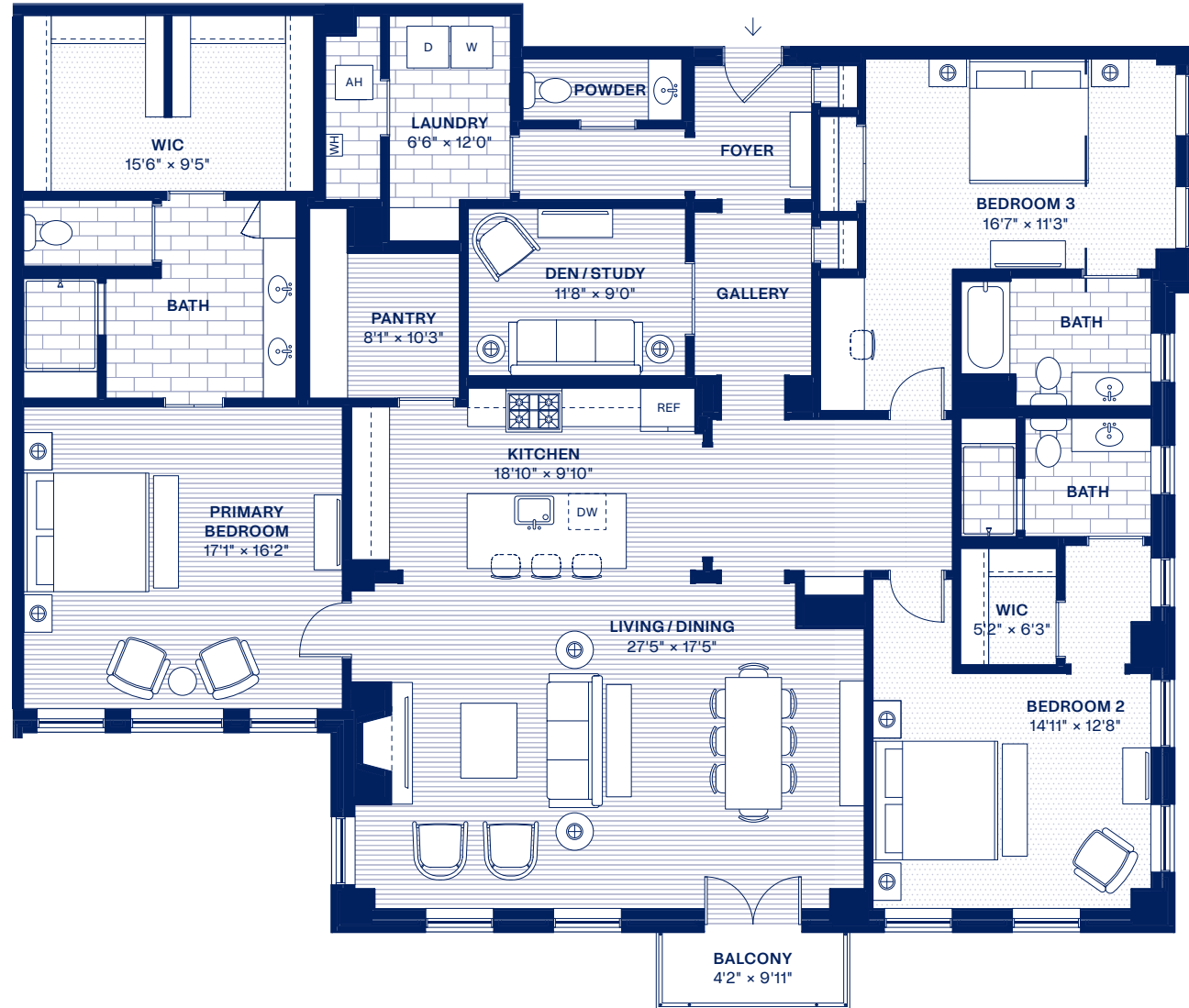
RESIDENCE 202

3 Bedrooms
3 Bathrooms
Powder Room
Den/Study

TOTAL INTERIOR/OUTDOOR
2,602 sqft / 36 sqft

SIGNATURE AMENITIES: EXTENDING YOUR LIVING

Gallery Entry = 773 sqft
Club Room & Terrace = 1,040 sqft
Fitness Studio = 407 sqft
Post & Package Room = 254 sqft
Rooftop Terraces = 2,412 sqft
Total Signature Amenities = 4,886 sqft



While renderings, floor plans, and descriptions aim to portray Birney Park residences accurately, final dimensions, configurations, and finishes may vary slightly due to construction practices and regulations. Please refer to sales contracts and specifications for confirmed details.

